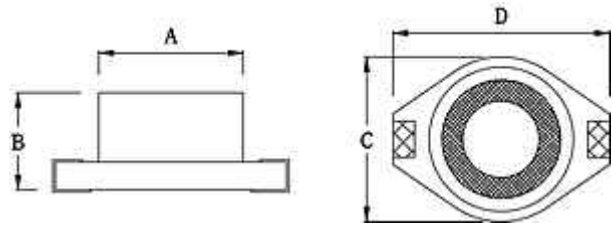


## SMD Shielded Power Inductor – SSPS Series

# SCHMID-M



### Features

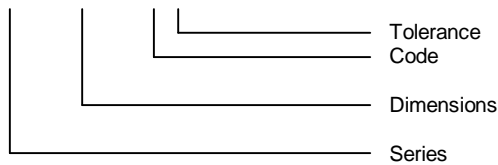
- Magnetic shielding
- Flat bottom surface ensures secure and reliable mounting
- Low DC resistance, low profile and high current rating capacities

### Dimensions

Part No.	A	B	C	D
SSPS0804	8.40 ± 0.20	5.08 Max.	9.40 Max.	12.95 Max.
SSPS1306	12.70 ± 0.20	7.62 Max.	15.24 Max.	18.54 Max.

### Ordering Information

SSPS 0804-100 M



SSPS0804	SSPS1306
1000pcs.	250pcs.

### Characteristics

Tolerance: M = ± 20%, M tolerance is standard.

Code	L (µH)	SSPS0804		SSPS1306	
		RDC Max. (Ω)	IDC Max. (A)	RDC Max. (Ω)	IDC Max. (A)
1R0	1.0	0.021	5.60		
1R5	1.5	0.022	5.20		
2R2	2.2	0.032	5.00		
3R3	3.3	0.039	3.90		
4R7	4.7	0.054	3.20		
6R8	6.8	0.075	2.80		
100	10	0.101	2.40	0.040	8.00
150	15	0.150	2.00	0.048	7.00
220	22	0.207	1.60	0.059	6.00
330	33	0.334	1.40	0.075	5.00
470	47	0.472	1.00	0.097	4.00
680	68			0.138	3.00
101	100			0.207	2.40
151	150			0.293	2.10
221	220			0.470	1.90
331	330			0.780	1.10
471	470			1.080	1.10
681	680			1.400	0.96
102	1000			2.010	0.80

Test Frequency 100KHz