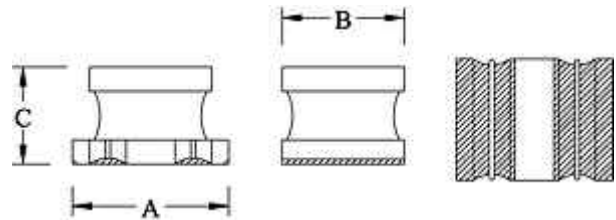
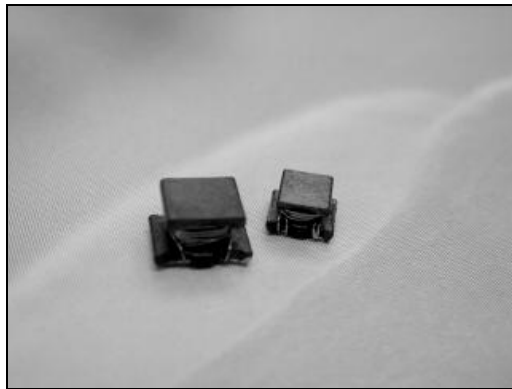


SMD RF Inductor – SQH Series

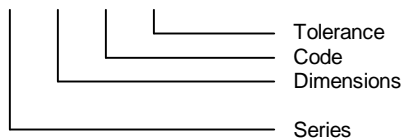


Features

- SQH Series inductors have a high quality factor at high frequency and low DC resistance
- The low DC resistance permits high current flow
- SQH has excellent solder heat resistance
- Both, flow and reflow soldering method can be used

Ordering Information

SQH 32 4R7 M



Dimensions

Part No.	A	B	C
SQH32	3.2 ± 0.30	2.5 ± 0.30	2.0 ± 0.20
SQH45	4.5 ± 0.30	3.2 ± 0.20	2.6 ± 0.20

Package

SIZE	SQH32	SQH45
QTY/REEL	1500pcs.	500pcs.

SMD RF Inductor – SQH Series



Code	L (μ H)	Test Frequency (Hz)	SQH32		SQH45	
			RDC Max. (Ω)	IDC Max. (mA)	RDC Max. (Ω)	IDC Max. (mA)
1R0	1.0	1M	0.50	445	0.20	500
1R2	1.2	1M	0.60	425	0.20	500
1R5	1.5	1M	0.60	400	0.30	500
1R8	1.8	1M	0.70	390	0.30	500
2R2	2.2	1M	0.80	370	0.30	500
2R7	2.7	1M	0.90	320	0.32	500
3R3	3.3	1M	1.00	300	0.35	500
3R9	3.9	1M	1.10	290	0.38	500
4R7	4.7	1M	1.20	270	0.40	500
5R6	5.6	1M	1.30	250	0.47	500
6R8	6.8	1M	1.50	240	0.50	450
8R2	8.2	1M	1.60	225	0.56	450
100	10	1M	1.80	190	0.56	400
120	12	1M	2.00	180	0.62	380
150	15	1M	2.20	170	0.73	360
180	18	1M	2.50	165	0.82	340
220	22	1M	2.80	150	0.94	320
270	27	1M	3.10	125	1.10	300
330	33	1M	3.50	115	1.20	270
390	39	1M	3.90	110	1.40	240
470	47	1M	4.30	100	1.50	220
560	56	1M	4.90	85	1.70	200
680	68	1M	5.50	80	1.90	180
820	82	1M	6.20	70	2.20	170
101	100	1M	7.00	80	2.50	160
121	120	1M	8.00	75	3.00	150
151	150	1M	9.30	70	3.70	130
181	180	1M	10.20	65	4.50	120
221	220	1M	11.80	65	5.40	110
271	270	1M	12.50	65	6.80	100
331	330	1M	13.00	65	8.20	95
391	390	1M	22.00	50	9.70	90
471	470	1K	25.00	45	11.80	80
561	560	1K	28.00	40	14.50	70
681	680	1K			17.00	65
821	820	1K			20.50	60
102	1000	1K			25.00	50
122	1200	1K			30.00	45
152	1500	1K			37.00	40
182	1800	1K			45.00	35
222	2200	1K			50.00	30

Tolerance: K = \pm 10%; M = \pm 20%